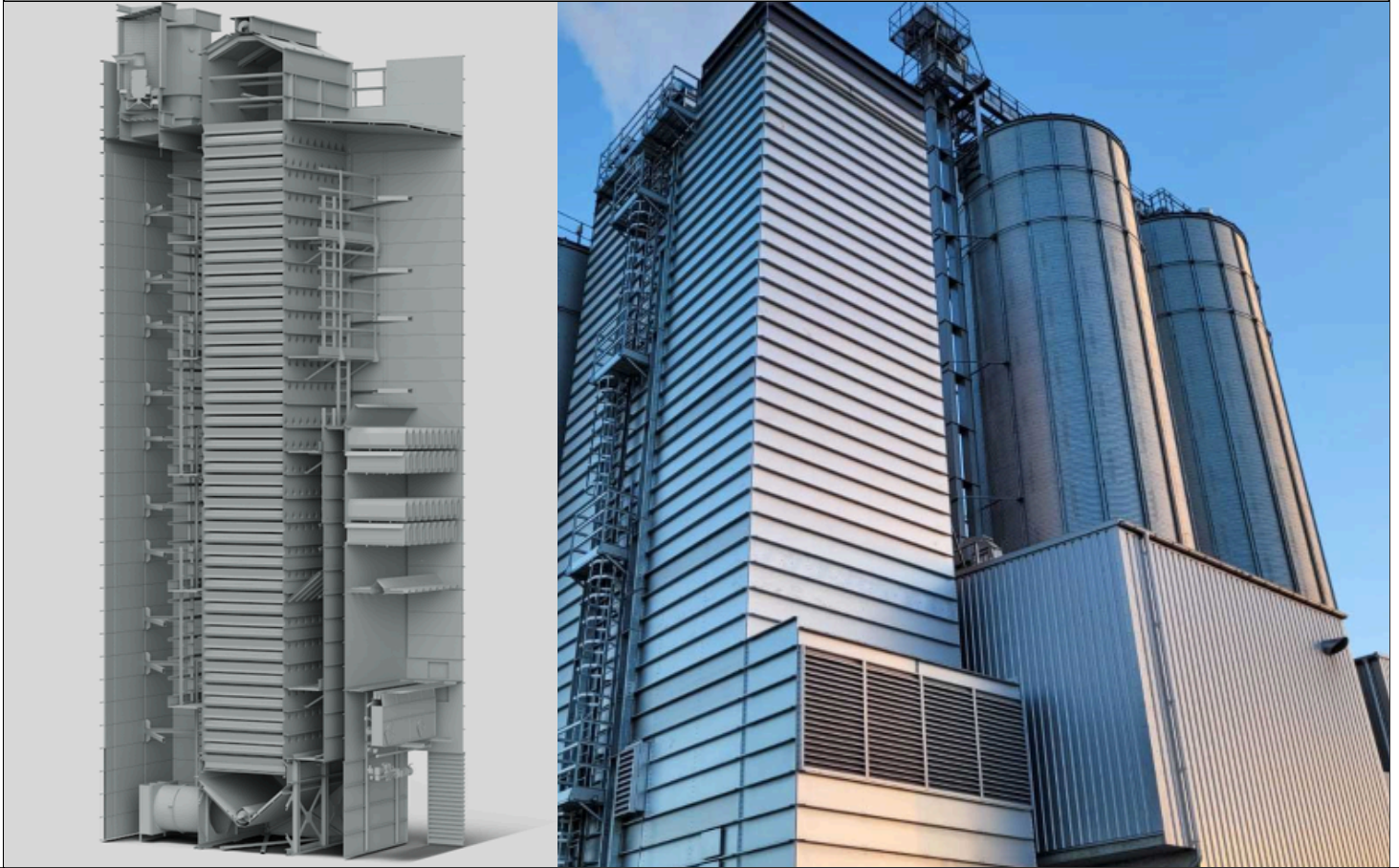


## DRYERS



Drying is a fundamental process for preserving grains, legumes, and seeds. The technology behind Strahl Agrimec mobile dryers ensures that the organoleptic qualities of the harvested seed are preserved.



Our range of stationary dryers has been studied to respond to the demands of clients processing a diverse range of products. Their construction guarantees extensive flexibility and the utmost precision in process control, adapting to the specific characteristics of a wide range of produce. Their modular design allows the load capacity to be adapted to the individual needs of each business, while the study architecture of the structure and the quality of the materials and assembly processes allows our dryers to maintain constant performance over time, making the most of our clients' investment.

## MOBILE DRYERS

Strahl mobile dryers are agile and easy to handle machines designed with know-how and experience to offer a combination of performance and transportability.

Particularly versatile and suitable for widely varying production cycles and situations, they are ideal for farms, contractors and for those looking for a product that requires limited authorisation/no authorisation for use and positioning.



### BENEFITS

- Recirculation of seeds
- Immediate start-up
- No further investments to work
- Works in all weather conditions
- Waste reduction
- Works with different cereals
- Works immediately after harvest
- Limitation of exposure to atmospheric agents

### OPERATING SYSTEM

- Discharge chute☒
- Central auger☒
- Plenum chamber☒
- Air duct☒
- Centrifugal fan☒
- Heat unit☒
- Worm gear reducer☒
- Roller with ball bearing for slewing ring☒
- Agitator☒
- Grain cleaner discharge☒
- Grain tester☒
- Loading auger☒
- Belt drive☒
- Bevel gear pairs☒
- Adjustable jacks☒
- PTO shafts☒
- Electric control panel☒
- Main drive shaft☒
- Burner

## MOBILE DRYERS

Mobile dryers are particularly agile, adapting to any situation and all types of cereal



### MOBILE DRYERS

#### BIODRY



##### Cleanest air

No contamination occurs between the product to be treated and the combustion air.



##### Efficiency

Despite its compact design and thanks to an innovative design solution, the BIODRY series is equipped with a large heat exchanger.



##### Homogeneity

The grain, legume or seed is kept in constant motion to ensure even drying, a guarantee of better preservation.



##### Time optimization

The dryer's design maximizes surface area for efficient heat exchange between hot air and grain, ensuring unbeatable drying times.

#### TURBODRY

##### Thermal energy optimization

Drying capacity is maximized because all the heat generated is channeled into the product to be dried.



##### Temperature stability

The refractory material coating stabilizes drying air temperature, ensuring efficient combustion and significant energy savings.



##### Homogeneity

The grain, legume or seed is kept in constant motion to ensure even drying, a guarantee of better preservation.



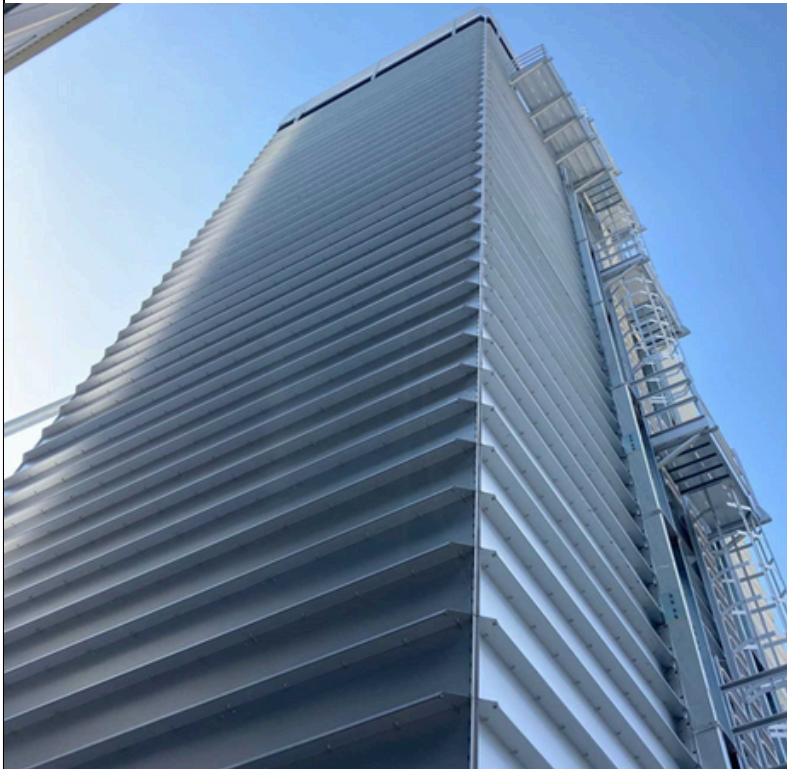
##### Time optimization

The dryer's design maximizes surface area for efficient heat exchange between hot air and grain, ensuring unbeatable drying times.



## STATIONARY GRAIN DRYER

Our range of stationary dryers has been studied to respond to the demands of clients processing a diverse range of products. Their construction guarantees extensive flexibility and the utmost precision in process control, adapting to the specific characteristics of a wide range of produce. Their modular design allows the load capacity to be adapted to the individual needs of each business, while the study architecture of the structure and the quality of the materials and assembly processes allows our dryers to maintain constant performance over time, making the most of our clients' investment.

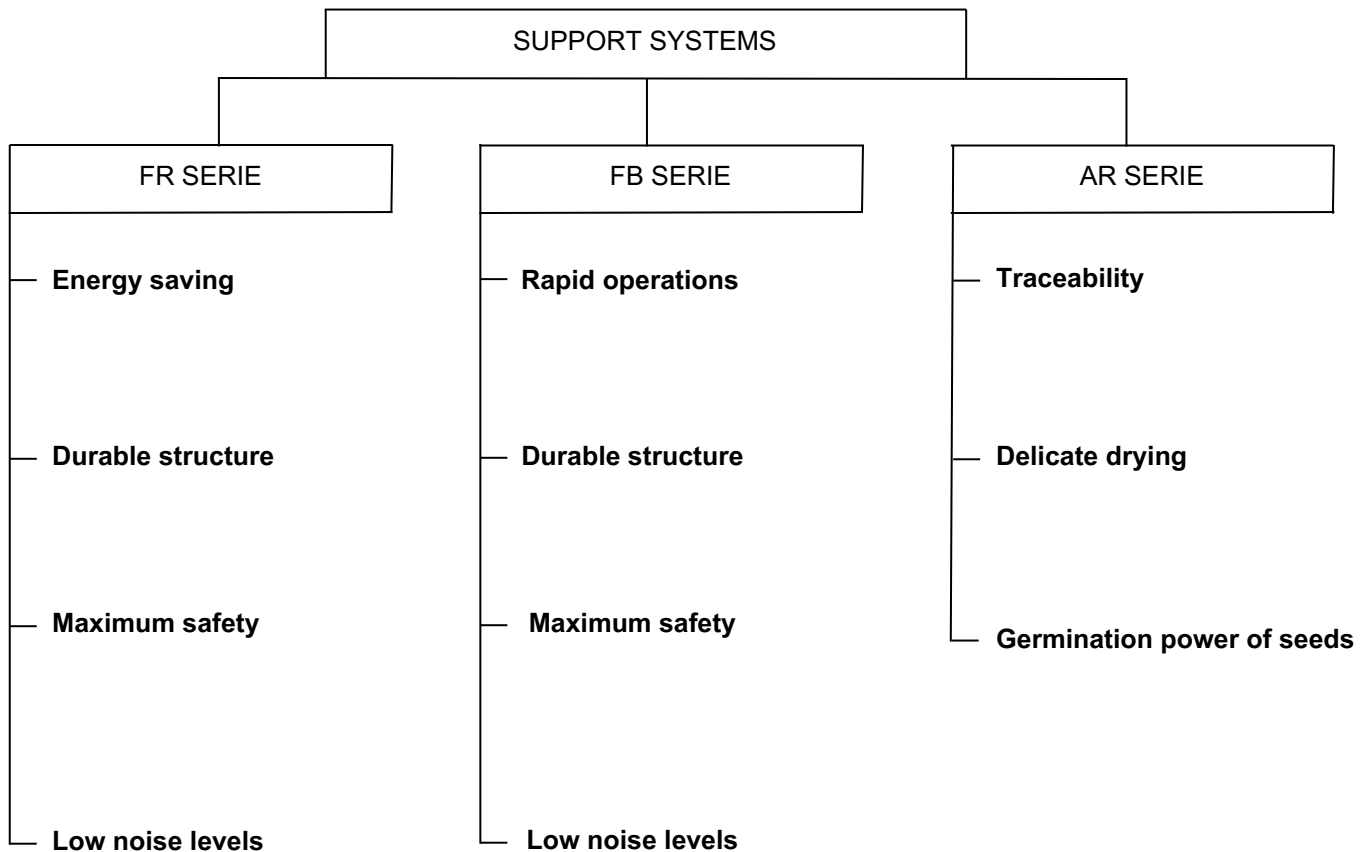


### BENEFITS

- 1 Big volumes
- 2 Continuous production
- 3 Technology and automation
- 4 Integration with storage plant
- 5 High efficiency
- 6 High quality construction
- 7 Reliability, durability over time
- 8 Uniformity of drying process
- 9 Safe and easy maintenance
- 10 Remote contro
- 11 Remote service
- 12 Low noise/dust emission
- 13 After-sales service
- 14 Certifications

## STATIONARY GRAIN DRYER

The ideal solution for the treatment of grain, legumes and foodstuffs in a controlled and uniform manner, with both continuous and batch solutions



## CHARACTERISTICS



### FR SERIE

FR dryers are designed and manufactured to handle medium- and large-volume processing, uniting efficiency and sustainability. Equipped with an integrated heat recovery solution that lowers energy needs, they are incredibly durable and offer a comfortable working environment. Easily accessed inspection systems allow simple and safe maintenance. The state-of-the-art control panel allows for ample customisation of drying recipes, with an integrated heat recovery solution that lowers energy needs.



### FB SERIE

The FB series is a concentration of technology and efficiency designed to handle small volumes of continuous-flow produce, they offer extraordinary efficiency in mechanical operations and in the management of drying programmes.

Available in two versions, one with linear burners and the other with traditional burners, they offer perfect drying, thanks to the possibility of customising the flow of air and the width of the cooling area.



### AR SERIE

Designed for small quantities or for high product rotation, these are recirculating dryers, which allow for particularly gentle drying and are thus suited to drying delicate produce such as paddy rice. In AR dryers, once the machine has been completely filled, the product is recirculated within the dryer via a bucket elevator. This means that it alternates between the drying zone and the upper tempering hopper.