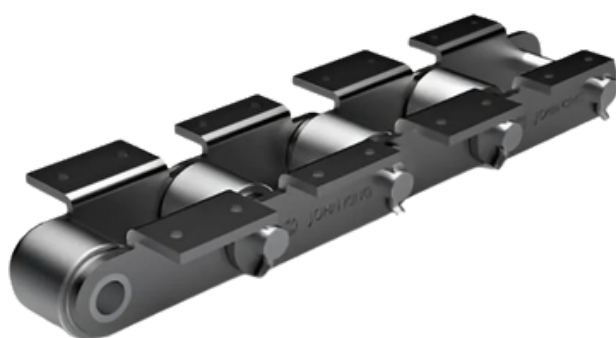
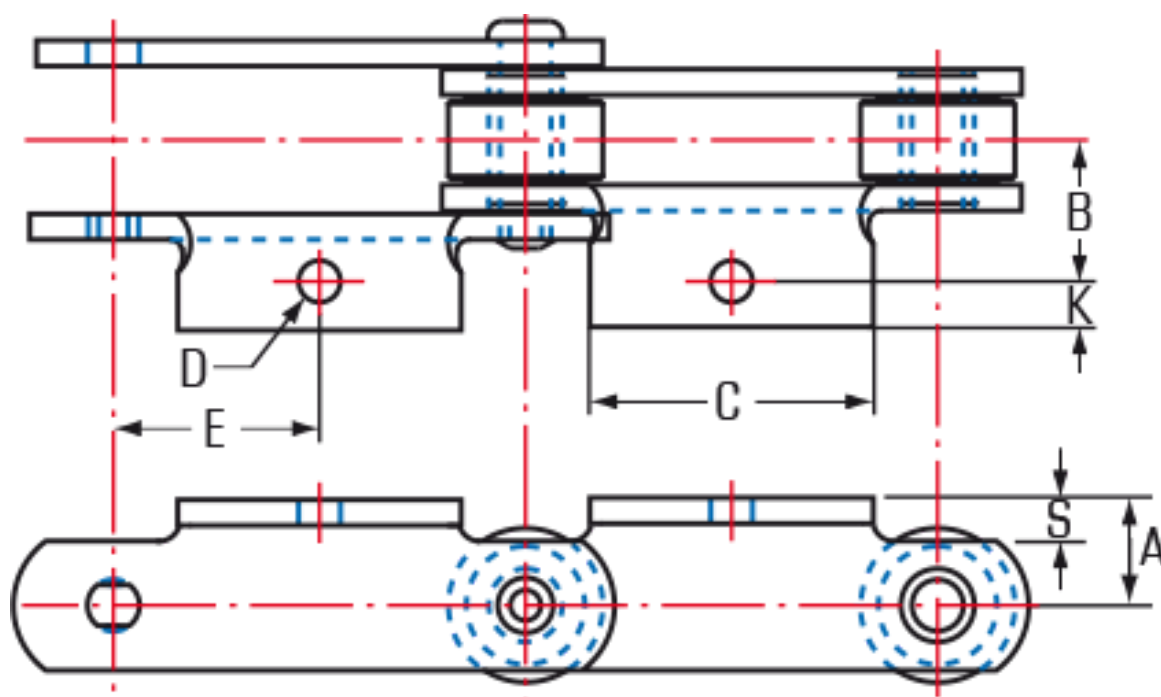


# AMERICAN STANDARD ENGINEERING CHAINS



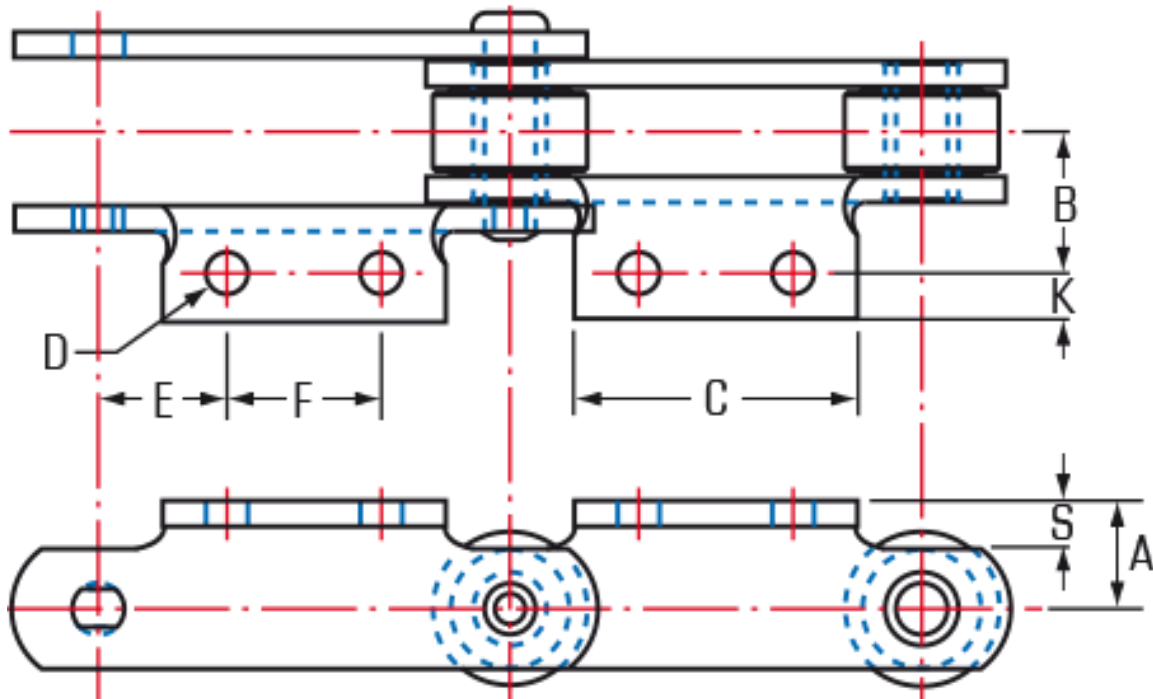
## AMERICAN STANDARD ENGINEERING CHAINS ATTACHMENTS

American standard chains offer a wide selection of accessories for various mechanical handling applications. Over the years, SKIF has built a substantial inventory of accessory types and tools, allowing for a prompt response to most accessory-related requests.



ENGINEERED STEEL ATTACHMENTS A1

Chain Number	B	E	D	A	K	C	S	Weight
			Bolt Hole Dia					
	inches							
JKR1539	1.88	1.53	0.56	1.25	0.70	3.00	0.31	7.9
JKR2188	1.69	2.00	0.41	1.00	1.03	2.75	0.31	7.9
JK1120	1.38	2.00	0.41	0.81	0.63	2.50	0.19	3.6
SS188	1.88	1.31	0.41	0.81	0.69	2.12	0.25	4.5



ENGINEERED STEEL ATTACHMENTS A2

Chain Number	B	E	D	F	K	A	C	S	Weight
			Bolt Hole Dia						
	inches								
JKR188	2.00	0.75	0.41	2.00	0.52	1.00	3.38	0.19	4.90
JKB188	2.09	0.67	0.34	1.25	0.47	0.81	2.13	0.25	4.50
JKB120	2.66	1.13	0.41	1.75	0.81	1.13	4.25	0.38	9.40
JKR1539	1.88	1.53	0.56	1.88	0.70	1.25	3.00	0.31	7.90
JKR2188	1.69	2.00	0.41	1.75	1.03	1.00	2.75	0.31	7.90
JKR3420	2.06	1.27	0.41	1.50	1.00	1.25	2.75	0.31	9.30