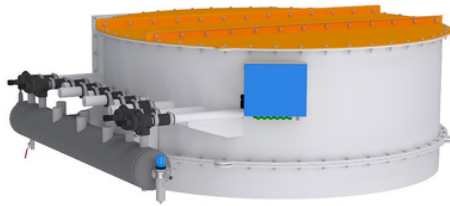
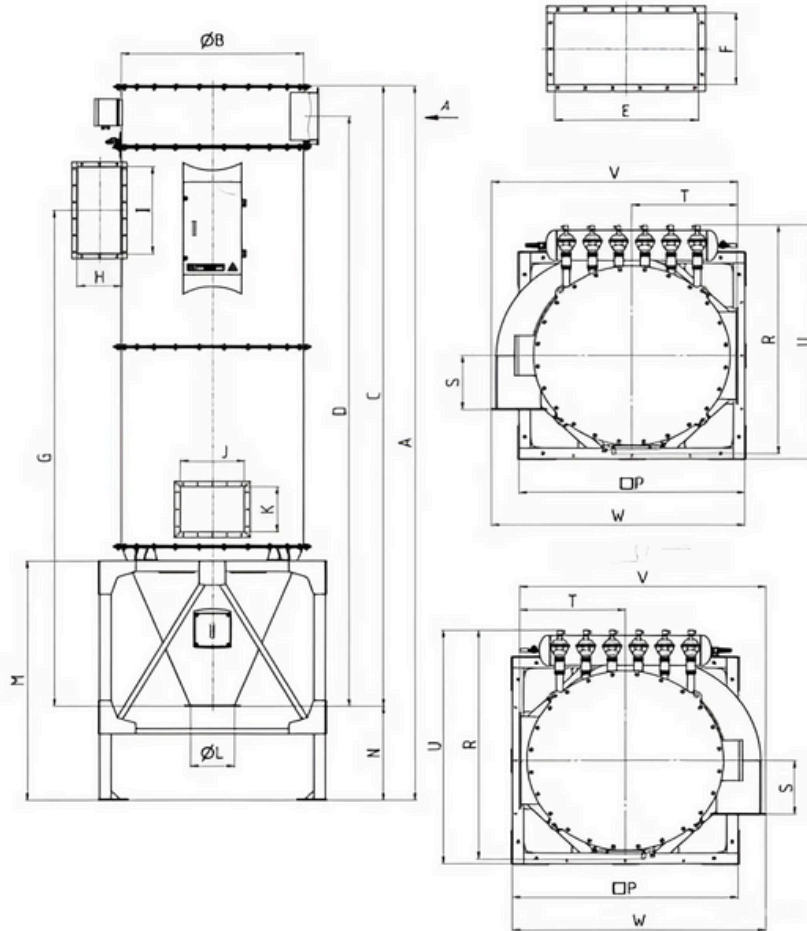


## Cyclo-f™



- Solid particles are thrown against the cyclone walls by centrifugal force, where they settle and collect at the bottom of the equipment.
- Requires less maintenance compared to other filters as it has no moving parts.
- Handles large volumes of gas flows with high speed and efficiency.
- Typically ranges from 70% to 95%, depending on particle size and gas flow speed.
- Varies from a few cubic meters per hour to several thousand cubic meters per hour.
- Often made from stainless steel, aluminum, or other corrosion-resistant materials, allowing operation in aggressive environments.
- Effectively removes particles sized 5 microns and larger.
- Typically ranges from 100-200 Pa, depending on design and operating conditions.
- Serve as an additional barrier for particles not removed in the first stage.
- Purified gas flow causes less wear on downstream equipment, extending its service life and reducing maintenance costs.
- Additional filters reduce the accumulation of particles on the cyclone walls, lowering the risk of clogging and the need for frequent cleaning.
- Internal filters stabilize cyclone operation, ensuring consistent cleaning regardless of fluctuations in incoming particle flow.

The inlet swirl separates particles. Large particles settle; fine dust reaches the filter. Clean air enters the chamber, and dust collects on sleeves. Pneumatic pulses clean the sleeves by timing or pressure drop.



Model of the filter	Performance, m <sup>3</sup> /h	Filter area, m <sup>2</sup>	A	ØB	E	F	H	I	J	K	ØL	N	P	U	W
Cyclo-f-21.20	4500-5500	18,8	4750	1100	500	300	250	400	440	340	300	910	1560	1675	1620
Cyclo-f-21.25	5500-7000	23,4	5250	1100	500	300	250	400	440	340	300	910	1560	1675	1620
Cyclo-f-21.30	7000-8500	28	5750	1100	500	300	250	400	440	340	300	910	1560	1675	1620
Cyclo-f-28.25	8500-10000	35,7	5400	1250	650	350	300	650	440	340	300	710	1560	1780	1745
Cyclo-f-28.30	10000-12000	42,9	5900	1250	650	350	300	650	440	340	300	710	1560	1780	1745
Cyclo-f-44.25	12000-14500	49	6345	1600	1000	400	450	850	920	586	300	1110	2010	2170	2300
Cyclo-f-44.30	14500-17000	58,9	6845	1600	1000	400	450	850	920	586	300	1110	2010	2170	2300
Cyclo-f-44.35	17000-20000	68,7	7345	1600	1000	400	450	850	920	586	300	1110	2010	2170	2300
Cyclo-f-52.35	20000-25000	81,7	7395	1700	1100	450	450	1000	920	586	300	1010	2010	2215	2350
Cyclo-f-68.35	25000-30000	106,2	8100	1920	1250	550	550	1150	920	586	300	1210	2500	2570	2800
Cyclo-f-84.35	30000-36000	131,2	8100	2120	1350	550	550	1250	920	920	300	910	2500	2670	2900
Cyclo-f-112.30	36000-42000	147,2	7700	2350	1450	650	600	1350	920	920	300	1210	3750	3410	3690
Cyclo-f-112.35	42000-50000	174,9	8200	2350	1450	650	600	1350	920	920	300	710	3750	3410	3690