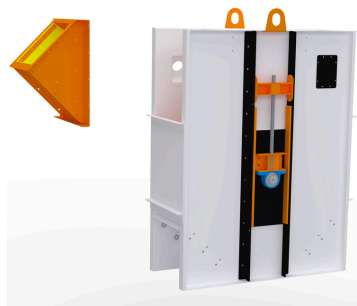
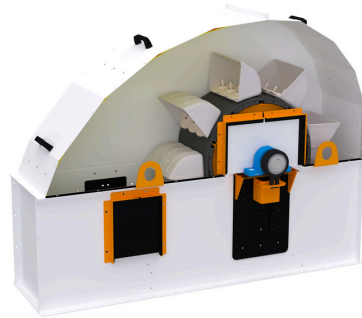
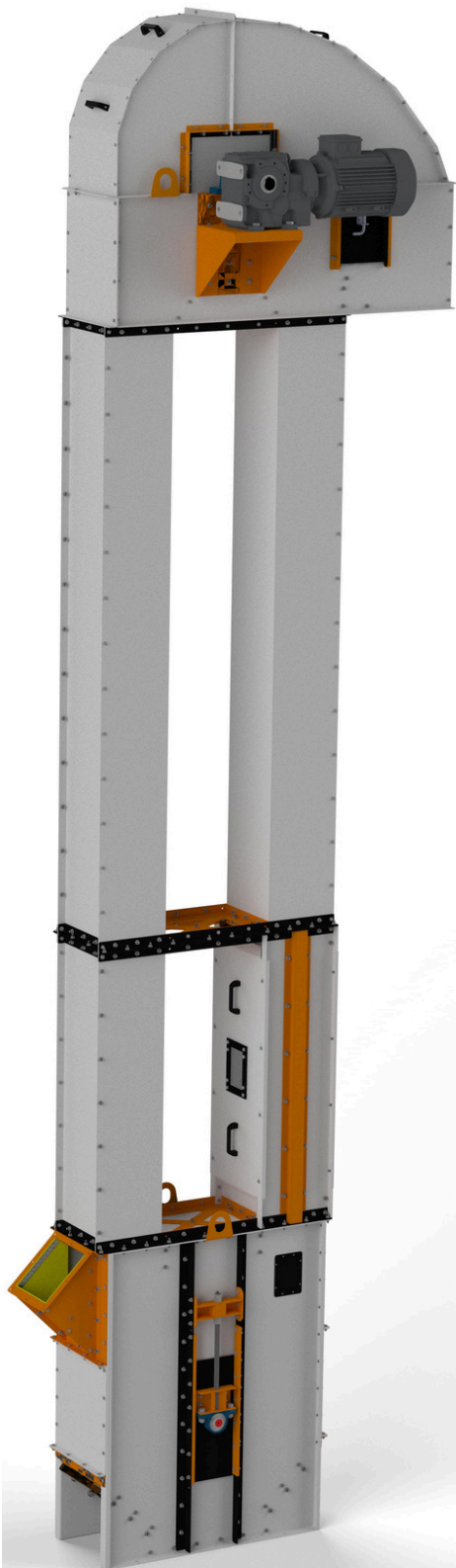


## ECOTRU™



- Reliable protection against reverse movement is provided by a backstop;
- The construction is made of painted or galvanized steel;
- Lining of the working part extends the service life.

- Material: stainless steel, 316L;
- FDA silicone designed for contact with food products;
- High-temperature graphite seal (-200°C - +500°C);
- Integrated flange made of stainless steel 316L.

- Secure belt fixation for elevator belt;
- Enhanced contact area with the belt;
- Prevents belt swaying, thus minimizing the risk of belt deviation;
- Consistent bucket projection along the entire belt length;
- High wear resistance and durability.

- Polymer material: HDPE;
- Bucket designed for processing heavy bulk products;
- Suitable for handling both low and very high-speed product streams;
- Operating temperature range from -40°C to +70°C;
- Maximum temperature: +80°C.

- Main belt tensioning system;
- Lining of loading chutes;
- Shoe cleaning hatch.

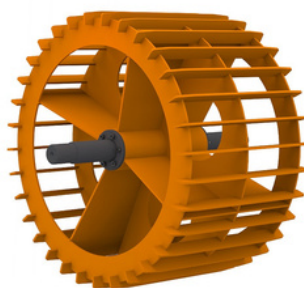
- Guaranteed productivity - 100, 150, 200, 250, 300, 350, 450, 500, 1000, 1500 t/h;
- Explosion-proof housing design;
- Optimal kinematics results in 10% lower electricity consumption compared to analogues;
- The design of the receiving and discharge devices allows minimizing the coefficient of breakage increase by 7-8 times;
- Abrasion-resistant construction.



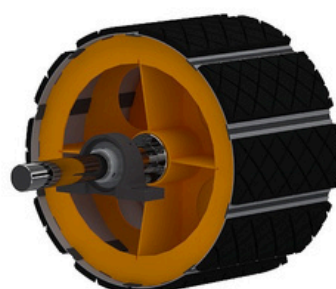
- The technical service area enhances work during maintenance, especially when servicing the drive and bearings of the elevator head.



- The repair section allows easy access to the frame and buckets;
- Designed with removable covers on both sides of the elevator leg;
- Viewing windows on the covers are made of organic glass.



- The structural features allow minimizing stress on the lift system;
- Installation is simplified thanks to the quick-clamping Sati KLAB bushings;
- Specialized grooves in the linear plates help remove material residues and moisture;
- Due to the design, friction and noise are reduced, which positively impacts the lifespan of the structure.



- Pulleys are tailored to customer specifications;
- 12mm thick replaceable liner plates ensure longevity;
- Quick-clamping sleeves simplify setup;
- Specialized slots clear particles and moisture;
- Pulley design minimizes strain on the elevator system;
- CNC laser machines and Fronius welding ensure quality.

The bucket-type belt elevator efficiently transports bulk cargoes vertically with safety handling, minimal damage, low energy consumption, and centrifugal unloading at the head, making it ideal for grain crops and other materials.

Equipment supply/provision

Equipment category	Standard
Drive	Motovario (Italy)
Bearings	SNR (France)
Belt STIF	SNR (France)
Belt speed, not more	2,9 m/s
Bucket material	HDPE
Body coating	Painted/Galvanized

**Set of elevators  
20-100 t/h**

Equipment supply/provision

<b>Set of elevators 150-400 t/h</b>	Equipment category	Standard
	Drive	Motovario (Italy)
	Bearings	SNR (France)
	Belt STIF	SNR (France)
	Belt speed, not more	2,9 m/s
	Bucket material	HDPE
	Body coating	Painted/Galvanized

Equipment supply/provision

Equipment category	Standard
Drive	Motovario (Italy)
Bearings	SNR (France)
Belt STIF	SNR (France)
Belt speed, not more	3,25 m/s
Bucket material	HDPE
Body coating	Painted/Galvanized

**Set of elevators  
500 t/h**

The bucket-type belt elevator efficiently transports bulk cargoes vertically with safety handling, minimal damage, low energy consumption, and centrifugal unloading at the head, making it ideal for grain crops and other materials.

ECOTRU	20	50	100	175	250
Performance, t/h*	10...25	40...70	100...120	150...220	230...280
Belt speed	2,9 m/s	2,9 m/s	2,9 m/s	2,9 m/s	2,9 m/s
Belt width, mm	120	200	300	400	450
Bucket	JET10-090 HDPE	JET18-140 HDPE	JET28-170 HDPE	JET37-215 HDPE	JET44-215 HDPE
Wall thickness, mm: headers shoe pipes	2 2 2	2 3 2	2 3 2	2 3 3	2 3 3
D, mm	315	400	550	700	850
F, mm	1000	1450	1770	2160	2400
F1/ F2, mm	980/ 910	1400/ 1310	1750/ 1610	2100/ 1950	2300/ 2190
G, mm	1250	1250	1250	1250	1250
J, mm	2480	2480	2480	2480	2480
K, mm	911.5	1208	1523	1938	2123
K1, mm	580	750	940	1190	1300
K2, mm	526.5	673	883	1058	1208
L, mm	953	1246	1416	1966	2266
NxN1, mm	159x180	248x309	283x433	368x570	368x640
Q1xQ2, mm	180x250	309x300	433x450	570x450	640x600
T, mm	200	250	350	350	450