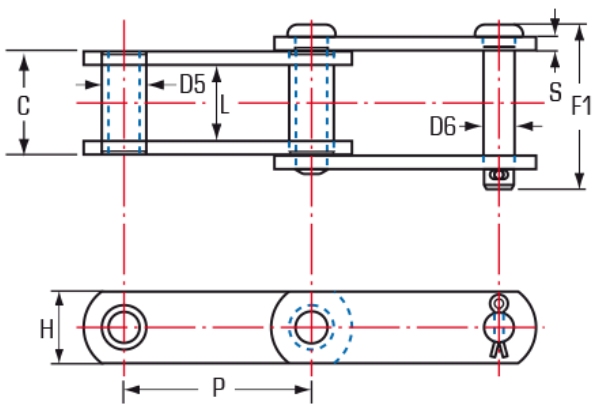


AMERICAN STANDARD ENGINEERING CHAINS

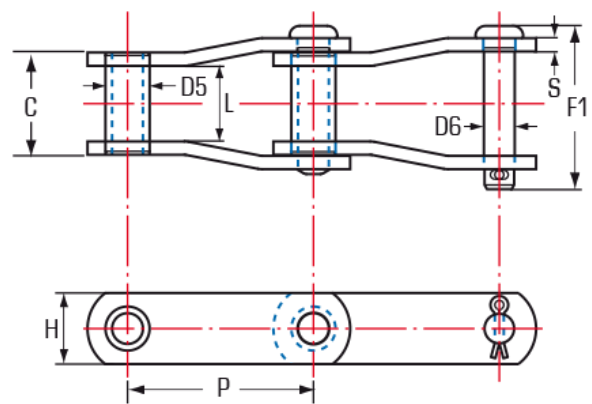


AMERICAN STANDARD ENGINEERING CHAINS WITHOUT ROLLERS

The smooth and stable flow of material through a process depends on the performance of the conveyor chain installed within the equipment. Bush class chains or steel knuckle chain are of the same construction as roller conveyor chain, but with the roller excluded. This series, with a reduced number of components, has proved to be particularly successful in high duty, high abrasion applications where lubrication is not possible. For many years KING steel bush chains have been proving performance in mill duty centrifugal discharge elevators within the more difficult applications encountered in the Cement and Steel Industry.



STYLE I



STYLE V

AMERICAN STANDARD ENGINEERED STEEL WITHOUT ROLLERS B29-12

Chain Number	Style	P	Minimum Breaking Load	Average Weight	Over-All Pin & Cotter	Sidebars		HTC	Bushings		Between Sidebars	Pins	
						Thickness	Height		Length	Outside Diameter		Diameter	HTC
						F1	S		H	C		D5	
					inches	lbs	lbs/ft		inches		inches		
SS188	I	2.609	23.000	3.80	2.69	0.25	1.13	T	1.57	0.88	1.06	0.50	C
SS131	I	3.075	36.000	7.40	3.52	0.38	1.50	T	2.06	1.25	1.31	0.63	C
SS825	V	4.000	55.000	8.70	3.87	0.38	2.00	T	2.31	1.14	1.56	0.75	C
SS102B	I	4.000	36.000	6.90	4.37	0.38	1.50	T	2.89	1.00	2.13	0.63	C
SS102.5	I	4.040	48.000	9.40	4.56	0.38	1.75	T	3.01	1.38	2.25	0.75	C
JKB111	I	4.760	48.000	10.20	4.97	0.38	2.00	T	3.39	1.44	2.63	0.75	I
JKB110	I	6.000	36.000	6.30	4.73	0.38	1.50	T	2.89	1.25	2.13	0.63	C
JKB833	I	6.000	48.000	9.30	4.97	0.38	2.00	T	3.38	1.44	2.63	0.75	I
JKB844	V	6.000	52.000	10.40	5.31	0.50	2.00	T	3.50	1.19	2.50	0.75	C
JKB856	I	6.000	82.000	16.50	5.99	0.50	2.50	T	4.00	1.75	3.00	1.00	I
JKB956	I	6.000	97.000	16.50	5.99	0.50	3.00	T	4.00	1.75	2.95	1.00	I
JKB857	I	6.000	97.000	21.00	5.99	0.50	3.25	T	4.00	1.75	3.00	1.00	I
JKB958	I	6.000	97.000	21.00	6.07	0.56	3.25	T	4.13	2.00	3.00	1.13	I
JKB859	I	6.000	155.000	34.00	7.62	0.63	4.00	T	5.00	2.38	3.75	1.25	I
JKB6150	I	6.050	124.000	17.20	6.36	0.50	2.50	T	4.35	1.75	3.34	1.00	C
JKB864	I	6.050	155.000	33.00	7.62	0.63	4.00	T	5.00	2.38	3.75	1.25	I
JKB984	I	7.000	155.000	33.00	7.35	0.63	4.00	T	5.00	2.50	3.75	1.38	I
JKB886	V	7.000	255.000	42.00	6.79	0.75	4.00	T	4.25	2.63	2.75	1.63	I
JKB4671	I	9.000	91.000	14.60	6.21	0.50	3.00	T	4.35	1.75	3.38	1.00	I