

TECHNOLOGY
GROUPTECHNOLOGY AND COMPONENTS
FOR BULK MATERIALS HANDLING

2024

CATALOG

PRODUCT
SERVICE

Cast Chains

Welded Steel Chains

Maxi Chains

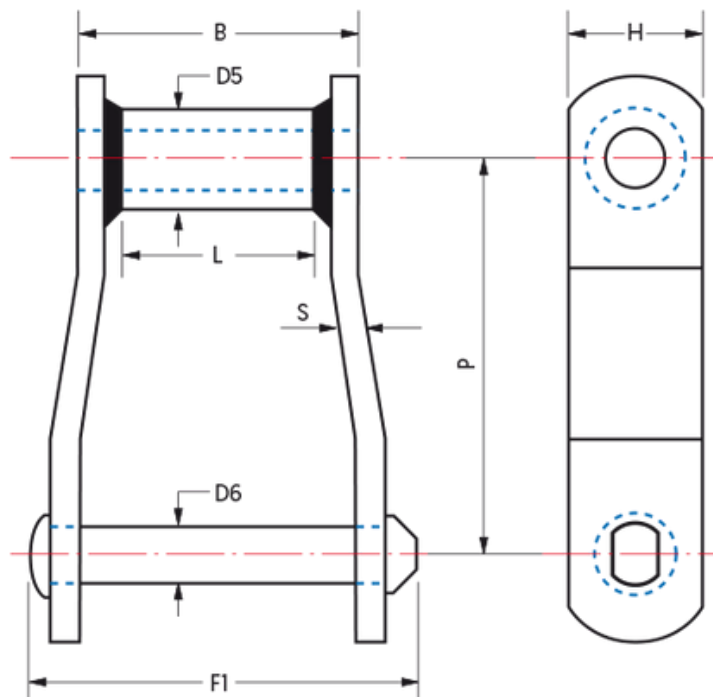


www.skif.sk

- High interference fit of the pin with heavy rivet or cotter ensures long-lasting performance.
- IBR designation offers maximum toughness and abrasion resistance, surpassing norms.
- Open barrel construction reduces risk of corrosion-related issues.
- Heat-treated components and riveted pin style enhance durability.
- Allows for easy chain length adjustment and serves as a direct replacement for Cast Bush and Pintle chains.
- Various attachments (K, F, G, S) can be welded to the base chain, enhancing versatility.

Welded Steel Chains

Welded steel chains for materials handling boast robust construction with an offset side plate and welded bush. The high interference fit of the pin, secured with a heavy rivet or cotter, ensures durability. Surpassing industry standards, the specification includes the proven IBR designation, offering through-hardening and surface induction hardening for maximum toughness and abrasion resistance in high-duty applications.

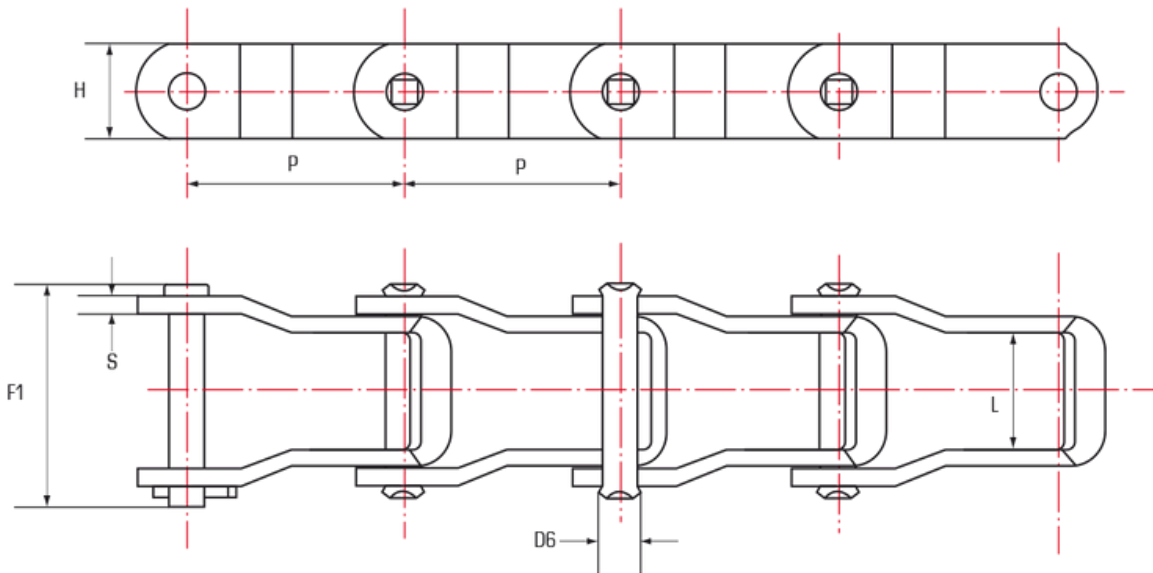


Chain Number	P	D5	D6	F1	L	B	S	H	lbs	lbs/ft
WH78	2.609	0.84	0.50	3.00	1.00	2.00	0.25	1.25	33.000	4.30
WH82	3.075	1.00	0.56	3.38	1.13	2.25	0.25	1.25	36.000	4.70
WH124	4.000	1.25	0.75	4.25	1.50	2.75	0.38	1.50	57.000	7.80
WH111	4.760	1.25	0.75	4.81	1.75	3.38	0.38	1.75	60.000	8.60
WH110	6.000	1.25	0.75	4.00	1.88	3.00	0.38	1.50	50.500	7.00
WH106	6.000	1.25	0.75	4.25	1.50	2.75	0.38	1.50	60.000	6.20
WH132	6.050	1.75	1.00	6.38	2.75	4.41	0.50	2.00	122.000	14.10
WH150	6.050	1.75	1.00	6.50	2.75	4.41	0.50	2.50	122.000	16.30
WH155	6.050	1.75	1.13	6.41	2.75	4.44	0.56	2.50	175.000	19.00
WH157	6.050	1.75	1.13	6.75	2.75	4.63	0.63	2.50	175.000	20.00
WH159	6.125	2.00	1.25	6.75	2.75	4.63	0.63	3.00	210.000	26.00
WH200	6.125	2.00	1.25	6.75	2.75	4.63	0.63	2.50	190.000	22.10



Cast Chains

The open barrel construction of this chain minimizes pin surface contact with the gearing face, reducing the risk of corrosion-related seizures and material build-up in sprocket roots. Ideal for handling materials prone to packing and corrosion, the Steel Pintle chain is suitable for diverse agricultural and industrial applications, featuring heat-treated components and a riveted pin style.

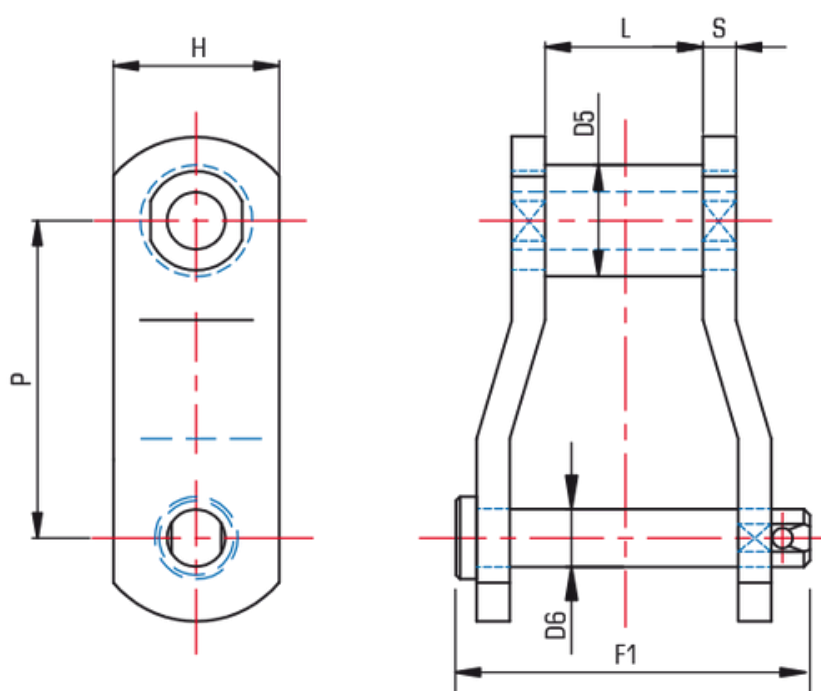


Chain Number	D (inch)	Working Load	Average Weight	F1 (Pin & Cotter)	L (Between Sidebars)	S (Thickness)	H (Height)	D6 (Diameter)
JK662	1.66	37.80	10.50	1.62	0.97	0.125	0.72	0.281
JK667H	2.31	42.30	11.70	1.73	1.00	0.125	0.875	0.312
JK667X	2.25	93.40	18.60	1.95	1.06	0.17	0.931	0.437
JK667XC	2.25	80.10	21.00	1.95	1.06	0.17	0.931	0.437
JK667K	2.25	90.70	24.40	2.13	1.08	0.20	1.062	0.437
JK667KC	2.25	106.80	25.60	2.13	1.08	0.20	1.062	0.437
JK667XH	2.25	124.60	28.00	2.31	1.08	0.224	1.062	0.469
JK88K	2.60	88.90	23.00	2.13	1.08	0.20	1.062	0.437



Maxi Chains

Versatile crank link steel bush chains for conveying or elevating applications, serving as a direct all-steel replacement for Cast Bush and Pintle chains. Featuring case-hardened alloy steel pin and bush for reliable performance, the crank link construction allows easy chain length adjustment. Various attachments can be welded to the base chain, with popular styles including K, F, G, and S.



Chain Number	P	F1	D5	L	S	H	D6	kg	kg/m
MX603	76.2	88	22.5	38	8	40	14	20.000	11.02
MX503	76.72	86	27.8	38	8	40	14	20.000	9.25
MX604	101.6	117	25	57	10	50	16	27.500	14.92
MX704	103.1	123	30	57	10	55	18	35.000	22.63
MX504	103.1	110	33.3	50	10	50	16	27.500	12.66
MX600	153.4	110	28.6	50	10	50	18	30.000	15.51
MX500	153.5	110	32	50	10	40	18	25.000	8.95