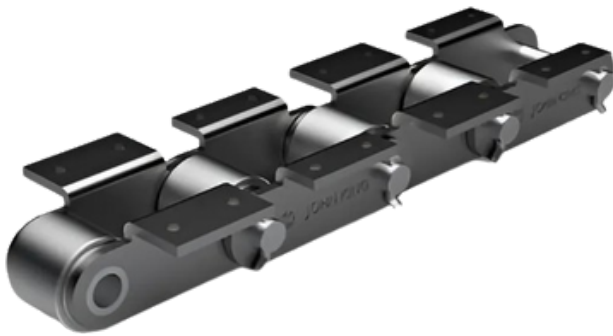
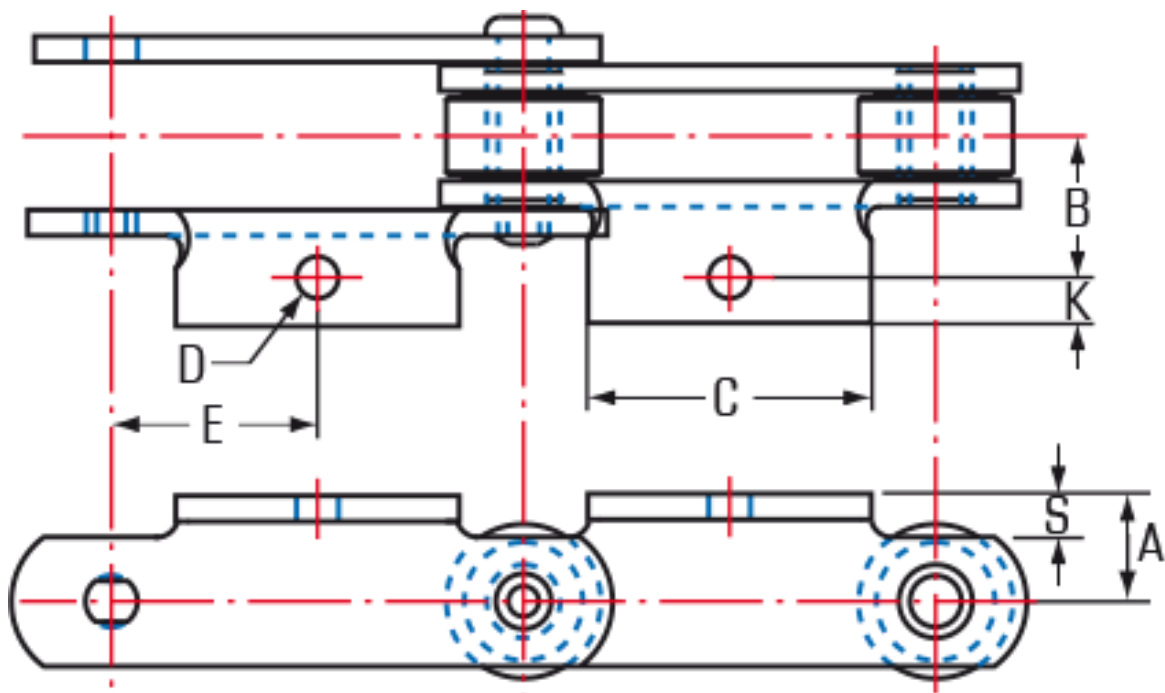


# American Standard Engineering Chains™

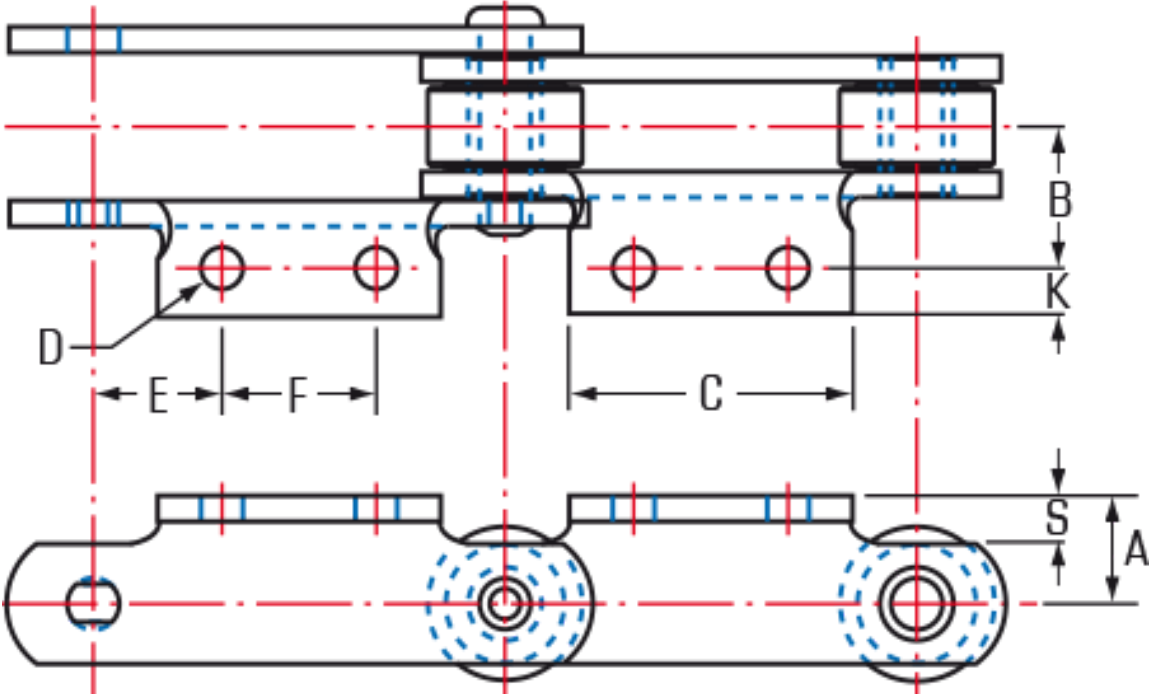


## American Standard Engineering Chains attachments

American standard chains undoubtedly have the widest range of attachments of any chain series. This reflects the tremendous diversity of mechanical handling applications in North America and where North American equipment has been supplied. JOHN KING has over the years built up a major library of different attachments types and tooling for their production. This allows the company to react to the majority of attachments requirement requested.



ENGINEERED STEEL ATTACHMENTS A1								
Chain Number	B	E	D	A	K	C	S	Weight
			Bolt Hole Dia					
	inches							
JKR1539	1.88	1.53	0.56	1.25	0.70	3.00	0.31	7.9
JKR2188	1.69	2.00	0.41	1.00	1.03	2.75	0.31	7.9
JK1120	1.38	2.00	0.41	0.81	0.63	2.50	0.19	3.6
SS188	1.88	1.31	0.41	0.81	0.69	2.12	0.25	4.5



ENGINEERED STEEL ATTACHMENTS A2									
Chain Number	B	E	D	F	K	A	C	S	Weight
			Bolt Hole Dia						
	inches								
JKR188	2.00	0.75	0.41	2.00	0.52	1.00	3.38	0.19	4.90
JKB188	2.09	0.67	0.34	1.25	0.47	0.81	2.13	0.25	4.50
JKB120	2.66	1.13	0.41	1.75	0.81	1.13	4.25	0.38	9.40
JKR1539	1.88	1.53	0.56	1.88	0.70	1.25	3.00	0.31	7.90
JKR2188	1.69	2.00	0.41	1.75	1.03	1.00	2.75	0.31	7.90
JKR3420	2.06	1.27	0.41	1.50	1.00	1.25	2.75	0.31	9.30